



FIRE RETARDANT

EVAPLINER

Protective Coating Specifically Designed for the Basins of Existing Cooling Towers, Fluid Coolers and Evaporative Condensers.

EvapLiner is only available through EVAPCO Mr. GoodTower® Service Centers.

Extend Equipment Life

EvapLiner is a cost effective means of extending the life of your equipment several years without the expense of replacing sections or the unit.

Restore Corroded Surfaces

The cold and hot water basins are critical components that are very susceptible to corrosion. If the basins are corroded and leaking, the entire tower may need replacement.

A Mr. GoodTower® Service Center will prepare the corroded areas and apply the exclusive EvapLiner protective membrane coating. EvapLiner will protect the basins from the harsh evaporative cooling environment. Water treatment chemicals will not effect EvapLiner.

Seal Leaks

EvapLiner seals leaks in sheet metal seams and fills in small pinholes.

Flexible Membrane

EvapLiner is a flexible membrane so it expands and contracts with the movement of the panels.

- ✓ EvapLiner will not Chip!
- ✓ EvapLiner will not Crack!
- ✓ EvapLiner will not Peel!

Fire Retardant



Cooling tower fires have started or spread from the use of flammable coatings. Evapco's Fire Retardant EvapLiner is self extinguishing. If a fire started in a cooling tower basin coated with Fire Retardant EvapLiner, the flames are self extinguishing and would not propagate.

Fire Retardant EvapLiner is Class A rated (the highest rating available). No other cooling tower coating is self extinguishing and class A rated.

Fire Retardant EvapLiner meets local fire regulations and codes. It protects your investment and provides peace of mind from a catastrophic failure.



Corroded Hot Water Basin



Hot Water Basin Coated with EvapLiner

Call EVAPCO at 410-756-2600 for the Mr. GoodTower® Service Center near you.



FIRE RETARDANT

EVAP

Research and Development

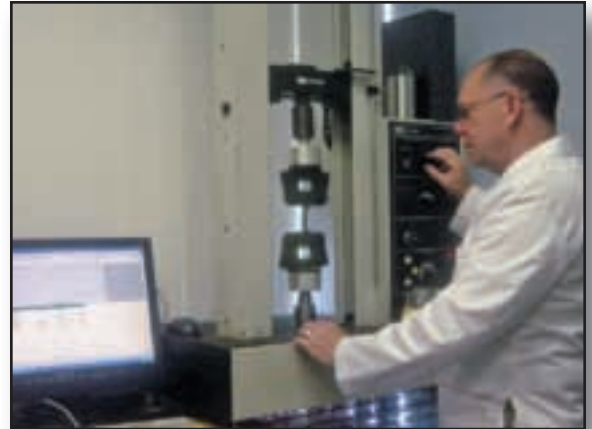
Fire Retardant EvapLiner is the result of years of research and development. EvapLiner was engineered specifically for evaporative cooling equipment applications and has proven to be the superior cooling tower coating on the market.

Mechanical and Chemical Bonding

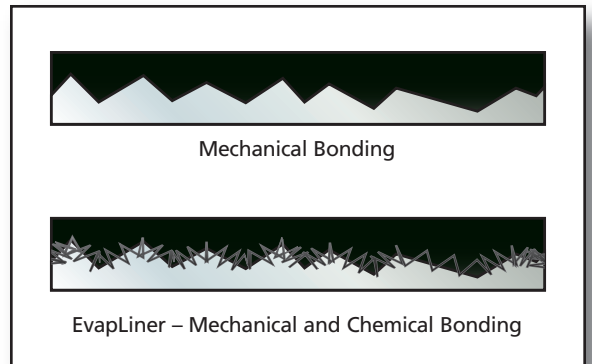
EvapLiner is a two part urethane coating which creates a surface impervious to water and chemicals. EvapLiner and our exclusive Adhesion Promoter combination creates a mechanical and chemical bond to the cooling tower surfaces. Ordinary coatings bond only mechanically. The mechanical bond illustration shows how a coating fills in the microscopic voids in the metal. EvapLiner, with its Adhesion Promoter, goes one step further. Minute hydroxyl bonds are created, which attaches to the metal and coating producing a strong covalent (chemical) bond, as depicted in the illustration.

Applications

EvapLiner can be applied to virtually any part of a cooling tower, from the cold water basin, to the hot water basin. It can be applied to galvanized and stainless steel, concrete and fiberglass. The photos below show the application on a large concrete basin, and a galvanized steel basin.



Engineered for Extreme Environments



Mechanical Bonding

EvapLiner - Mechanical and Chemical Bonding



Large Concrete Basin



Galvanized Steel Basin

EVAPLINER FIRE RETARDANT



Surface Preparation

Professionally Installed

EvapLiner is available and installed exclusively by EVAPCO Factory Authorized Mr. GoodTower® Service Centers. All service technicians that apply EvapLiner are factory trained and certified. Beware of non-certified personnel applying any coating to your evaporative cooling equipment. Proper surface preparation and application techniques are the key to long lasting, trouble free jobs.

Surface Preparation

All scale, rust, dirt, sediment, grease, oil, and any prior coatings that are flaking or peeling are completely removed to eliminate any chance of continuing corrosion. All surfaces are then cleaned with mineral spirits to insure all dust is removed.



Extra Protection for Leaking Seams

Surface Inspection and Repair

All surfaces are thoroughly inspected following the initial cleaning and grinding. Surfaces are inspected for any pinholes, or areas that need patching or repairing. All large holes are patched with metal patch plates and reinforced to insure panel integrity and eliminate the chance of developing leaks in the future. Surfaces are then re-cleaned to prepare for the adhesion promoter application.

Sealing of Panel Seams

When panel seams are leaking, EvapLiner and a special cross stitched geotextile fabric tape are used to seal the panel seams. This combination increases tensile strength in these susceptible areas, and produces a water tight seal.



Quick Curing Time

Limited Downtime

Depending upon ambient temperature, the tower can be placed into service in as little as 4 hours after the coating is applied. EvapLiner can be applied year around, even during the cold winter months. Beware of other coatings which require as much as 3 days before the tower can be filled with water.

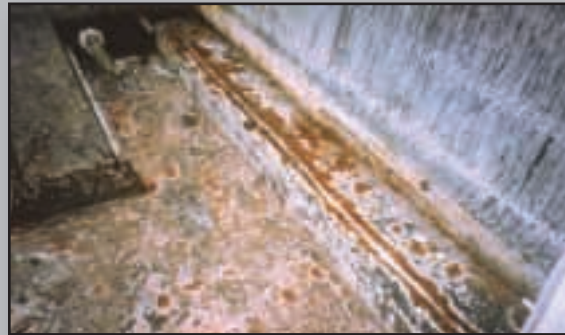
EvapLiner can be applied on a weekend with the equipment ready for service on Monday morning.



FIRE RETARDANT

EVAPLINER

Do the Surfaces on Your Evaporative Cooling Equipment Look Like This?



A Mr. GoodTower® Service Center Can Restore Your Equipment.

Your local Mr. GoodTower® Service Center has been factory trained to install the EvapLiner Protective Coating.

Contact them for EvapLiner installation and other repair/restoration services for all evaporative cooling equipment **regardless of the original equipment manufacturer.**

Instructions:

Insert CD into drive.
Presentation will start automatically.
Follow directions on screen.

System Requirements:

You must have Windows Media Player installed to view the video. If you do not have Windows Media Player installed, please obtain a free download of the Media Player software from www.microsoft.com

Note to Windows users: If you are operating on Windows 95 system or higher, you should already have Windows Media Player installed.

Call EVAPCO at **410-756-2600**, or visit **www.evapco.com**
for the Mr. GoodTower® Service Center near you.